



ARCHITECT@WORK LONDON 2019 ANNOUNCES APPROVED EXHIBITORS



ARCHITECT@WORK is pleased to announce the international architectural product suppliers who will be showing their latest innovations at the show, 30th-31st January 2019. The London edition of the global two-day trade event aimed at architects, interior designers and specifiers, will move to Old Truman Brewery in Shoreditch for its seventh London edition. The two days include free admission for registered trade visitors and complimentary catering throughout, encouraging networking and downtime as well as deal-making opportunities.

All exhibitors go through a rigorous selection process, with an external judging panel overseeing the product selection, to ensure that this is one of the UK's most highly respected trade shows of its kind. Exhibitors will showcase over 200 innovative products and offer the latest innovations in surface solutions, lighting technology as well as interior and exterior fixtures and fittings

Highlights include:

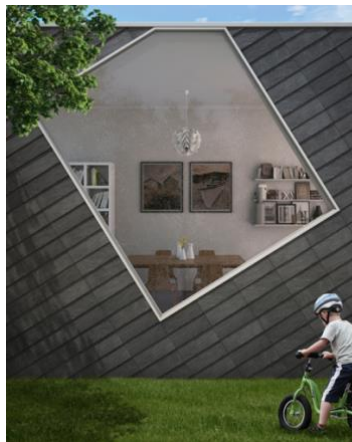
BUILDING ENVELOPE



For over 100 years **Lamilux** has been tailoring technological developments and services to improve the built environment. At this year's show, Lamilux will present three new products including the CI System Glass Element, an innovative, curved flat roof window with plastic border frame and hinge system. The elements offer optimum thermal insulation and unobstructed water drainage in a compact, thermal bridge-free system.

Lapitec, the Italian pioneer producing large, full-sized sintered stone slabs, will exhibit its sintered stone rain screen applications. The weather, pollution and graffiti resistant material is long lasting and durable. The surface is the largest available on the market.

Spanish brand **Cupa Pizarras** will showcase the first natural state cladding with invisible fastening and metal frame available in the UK. The simple geometric shapes allow new forms and combinations to be made, providing new ventilated façade design possibilities.



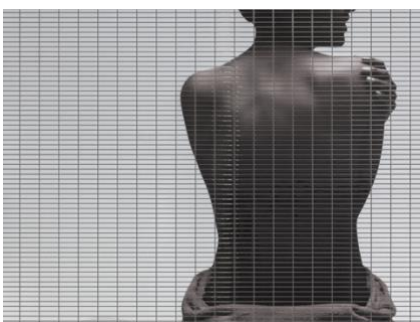
INTERIOR FINISHING



German company **Gira** has over a century of experience creating intelligent and user-friendly devices to make home living more convenient, secure and energy-efficient. Gira will exhibit five products including a light and blind controller, a flicker-free dimmable light interface and a new stainless steel switch range, E2.

British brand **SM'art by Geaves Surface** will showcase five new melamine surface designs including two oak styles, a river stone effect, a collection inspired by material and a marble range.

Austrian brand **Mafi Natural Wood Floors** will exhibit a new and innovative wood finish that creates a white natural surface. Due to the non-chemical drying process, the wood remains untainted whilst the strong colour, that normally requires artificial processes, stays intact. Due to the natural processing of the wood floors, the wood is able to keep its benefits such as its contribution to the indoor room climate.



Established in New York, **MyMosaic**'s groundbreaking product combines technology and art to allow any digital image to be replicated exactly onto mosaic. The image on the mosaic can have any dimension, allowing large or smaller spaces to be covered, and can be applied on all surfaces.

BUILDING SYSTEMS



French contemporary fireplace and stove company **Focus** will showcase its first airtight stove designed with a double-glass panel. The Boafocus combines a svelte and elegant curved silhouette with an efficient multi-functional gas fire.



Graff, established in the USA in 1970, is a leading market provider of tapware and bathroom products. Graff will present the new Harley collection, consisting of one, two, or three-hole versions for the sink, bathtub and bidet; wall, floor or deck-mounted models, and a linear lever option. The design of the contemporary collection was derived from the stylings of classic motorcycles, fusing an industrial aesthetic with details nostalgic of the all-American icons.

Portuguese lighting specialists **ROXO Lighting** will present a range of five products including the aluminium OREO luminaires, with three ring-shaped lights and two straight lights, and the GLAM Magnet which consists of suspended magnetic LED light modules of varying lengths.



ROXO Lighting



Aritco

Award-winning, Swedish lift manufacturer **Aritco** will present the world's first design-led, customisable, domestic lift. Aritco asked leading Swedish designer Alexander Lervik to design the first-ever residential lift as if it was a piece of furniture, using light and the latest technology to make it adaptable to modern ways of living, and the smart homes of the future.



-ENDS-

ABOUT ARCHITECT@WORK

The London show, just like the other 27 worldwide locations where ARCHITECT@WORK operates, features spotlights with dramatic black textiles and complimentary catering for all visitors throughout the event, encouraging networking and downtime as well as deal-making.

Other ARCHITECT@WORK editions:

Austria (Vienna)
Belgium (Kortrijk)
Canada (Toronto)
Denmark (Copenhagen)
France (Paris, Nantes, Lyon, Marseille, Bordeaux)
Germany (Berlin, Munich, Stuttgart, Dusseldorf, Hamburg, Wiesbaden)
Italy (Rome, Milan, Turin)
Luxembourg
The Netherlands (Rotterdam)
Norway (Oslo)
Spain (Barcelona, Madrid, Bilbao)
Sweden (Stockholm)
Switzerland (Zurich)
Turkey (Istanbul)

PRODUCT CATEGORIES:

Carcass / building envelope

Exterior joinery, facade and exterior cladding, insulation, air & water tightness, roof construction, load bearing structures, roof covering, drainage and rainwater systems

Building systems

Fixed lighting, sanitary ware, heating, air conditioning, electricity and controls, plumbing, renewable energy

Interior finishing

Interior layout/design, interior joinery, floor coverings, wall coverings, partition walls and ceilings, paints and adhesives, door fittings

Services, IT and media

Organisations and trade associations

Twitter: @ATW_INTL #ATWUK

Instagram: @architect_at_work #ATWUK

www.architect-at-work.co.uk

ARCHITECT@WORK UK runs 1pm – 8pm, 30th – 31st January 2019 at Old Truman Brewery

For further press information please contact Friends & Co:

Francesca Gregson, francesca@friendsandco.co.uk +44 (0)7967 605 213

Eleanor Lloyd, eleanor@friendsandco.co.uk +44 (0)7984 135 261

For other queries please contact Xpo Organisations Ltd:

Alexandra Moenens, alexandramoenens@architectatwork.com +44 (0)207 125 05 83